

# Gring and Woodin's Adventure in Water Kingdom 10

The tenth  
issue  
April  
2015

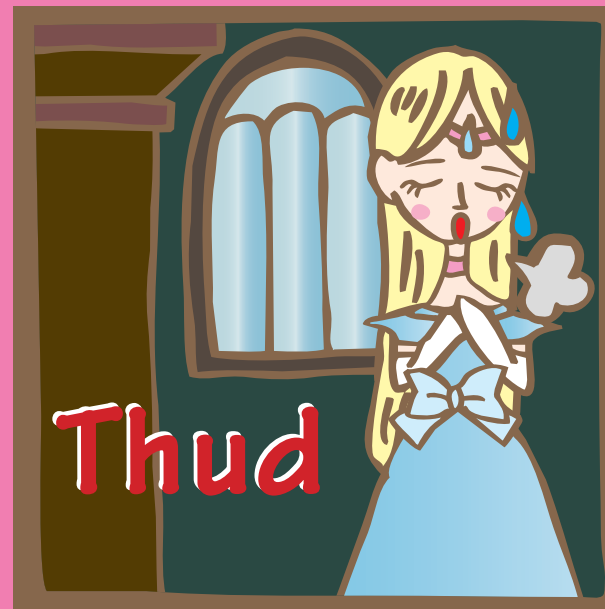


## Story so far

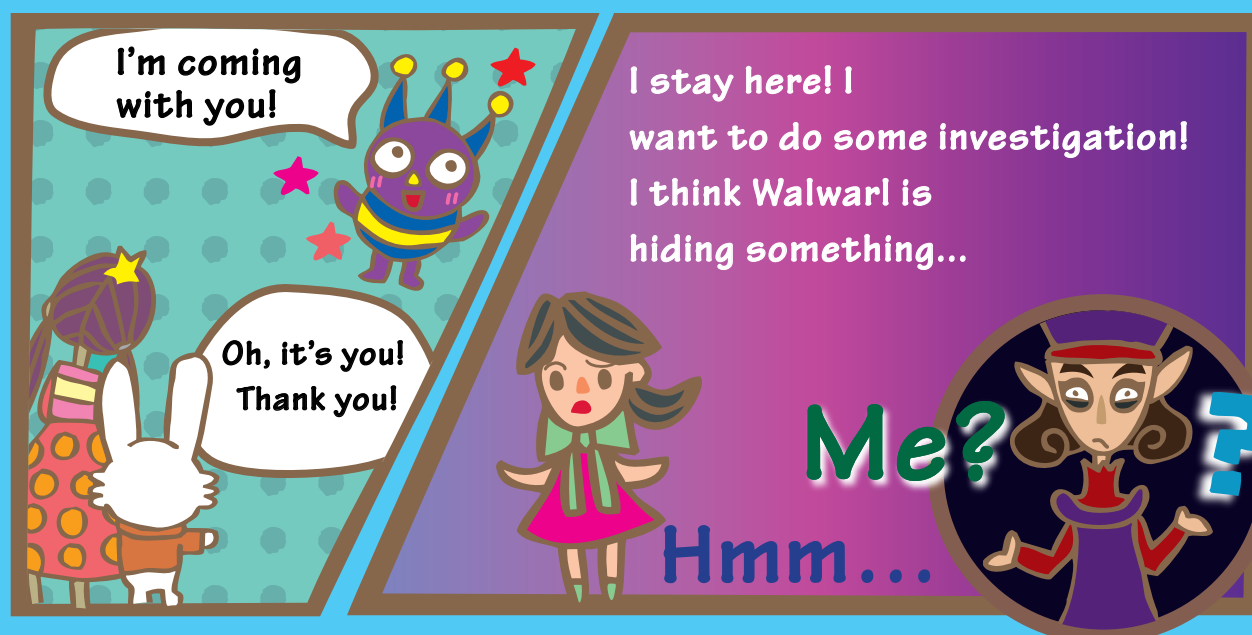
Gring and his friends finally managed to meet the princess and reported that Mizuneko was abducted by a monster. They became aware that it was Walwari, the princess' personal attendant, who made the witch alert. It was then that Walwari knocked on the door to the Princess' room.



You can read the previous issues of this comic on the website of the Asahi Glass Foundation.









**? In terms of two-liter PET bottles, how much water a person in a household in Tokyo uses daily?**

**Let's think together!**

①

35 bottles

②

63 bottles

③

113 bottles

\*Reference: Tokyo Metropolitan Bureau of Waterworks website



**Hint: If you let shower water running for 3 minutes, you use 36 liters.**

**18 bottles!**

That's a lot! I guess it's 3.

**Correct!**

At home, we daily use 225 liters or about 113 two-liter PET bottles per person. But we can save the water with simple tricks!

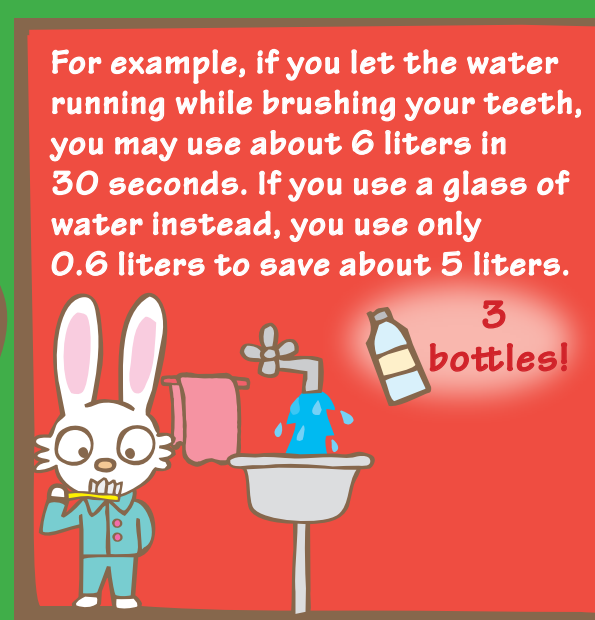
**Now a piece of information!**

**\*Reference: Tokyo Metropolitan Bureau of Waterworks website**

Japan is generally considered rich in water resources, but it's not true! Although the amount of rainfall is about 100% more than world average, due to the high population density, the amount of water available per person is quite limited!

Frequent rain!

Many people!





It is very eco-friendly to use remaining bathwater for washing and cleaning! Although it has been much reduced from the past, great amount of water is used to flush the toilet!



Majolaine, you know a lot of things! Amazing!



Not really... We witches traditionally save water, so my mother told me these things.



Hey! Remember that girl mentioning Monster Lab? Let's go find it!



Good idea!



Let's go to the market. There should be many people!



Stride

Stride

Trot, Trot, Trot...

To be continued ...



The next issue will be published sometime around June

Gring and Woodin's Adventure  
in Water Kingdom 10  
April 2015, The Asahi Glass Foundation

