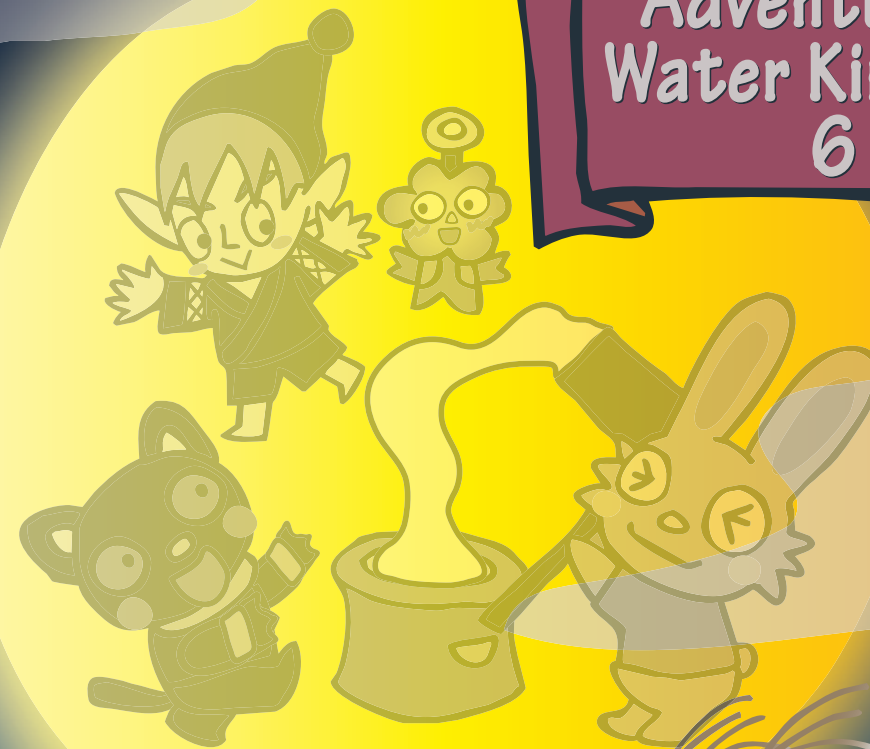


Gring and Woodin's Adventure in Water Kingdom 6



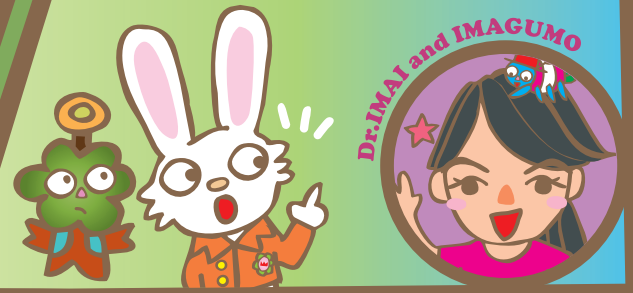
The sixth
issue
August 2014

af THE ASAHI GLASS FOUNDATION
www.af-info.or.jp

The story so far

Gring and his friends finally met Dr. Imai, and she handed them Ima-chan, a doll that has Dr. Imai's knowledge. They learned that there are sick plants just like Woodin, and then they headed towards the Water Kingdom to identify the cause.

Mizuneko!
We are coming to the Water Kingdom with you!
Dr. Imai told us that Woodin's complexion is something to do with the kingdom!



Dr. Imai: Doctor of nature. She examined Woodin.

So, how do we get to the Water Kingdom??



A Fairy Bus!

We will take the Forest Fairy Bus!
The atmosphere here is very clean.
I'm sure there are fairies!
Let's find them!

Morrie, they are Gring and Woodin.
They cannot see you.
Do you have that nut chocolate?



Humph!
We don't reveal ourselves thoughtlessly!
There are many fairy hunters out there!



Thrilled!!!



Where is he??

Huh? The budge...
Isn't that Crest of Friend!?



Gring and his companies started to look for forest fairies.

Where are they?



Giggle...

Huh?
I can't hear it!

Oh! I heard a giggle!



Tell me, already you are friends of Kawajiii!
Then it's a different story.
Mizuneko, let them eat this!



Ta-da!

It's bitter...

Wow!
I see him!

I'm Morrie, the forest fairy!



Now Morrie,
is there any bus stop
for the fairy bus
around here?



I see! You are thinking
of getting a fairy bus
ticket from me, aren't you?
I'm not giving it away for free!



You mean...
a quiz?
You have always
liked to
play quiz...

Correct! Very large size, isn't it?

If the forest decreases, the plants and
animals living there will
lose their home



It's a pity

Well, I'm
bringing you
to the bus
stop!

Look!
An owl!

Yup! This forest
is rich!



Q How much forest
decreases every year
on the earth?

Source: Forest Q&A on the MCA website
Children Forest Museum
(The data of reduction is based on
2000-2005 statistics)



- ① Equivalent to 2 Hawaii Islands ② Equivalent to 4 Hawaii Islands ③ Equivalent to seven Hawaii Islands

Hawaii Island is the greatest among
the Hawaiian Islands! Having
mentioned the large size of the
Big Island, the world forest
is decreasing at an astonishing
rate of larger area than the
entire Hawaii Island in two months.



A bit more
than 1



1.2.3.4...

So that means...
More than three
islands in six months!
Since there are
12 months in a year...

It makes seven.
The answer
is (three)!



Do you know that owls in a forest are proof
of the richness of the forest? In a rich forest,
there are many insects.
There are also small animals, including rats and
squirrels, that feed on those insects.
Owls feed on those animals!
Therefore, an owl is proof of a rich forest!



I am the king
of the night
forest!

Here
we are

They arrived at a big tree.

Morrie pulled
an ivy vine

Yank!



... to bring out a bus stop.

Rustle

Mori no Yousei Buss

Hiding Place
of Fairies,
the bus stop

This is the ticket!
The bus will arrive soon

Thanks!

Forest
Fairy Bus

Hey, customers!
Get on quickly!
We are leaving soon!

They waited for a while
Then fallen leaves started
to rustle and
trees to shake.

The sign
of arrival!

Whoa!!

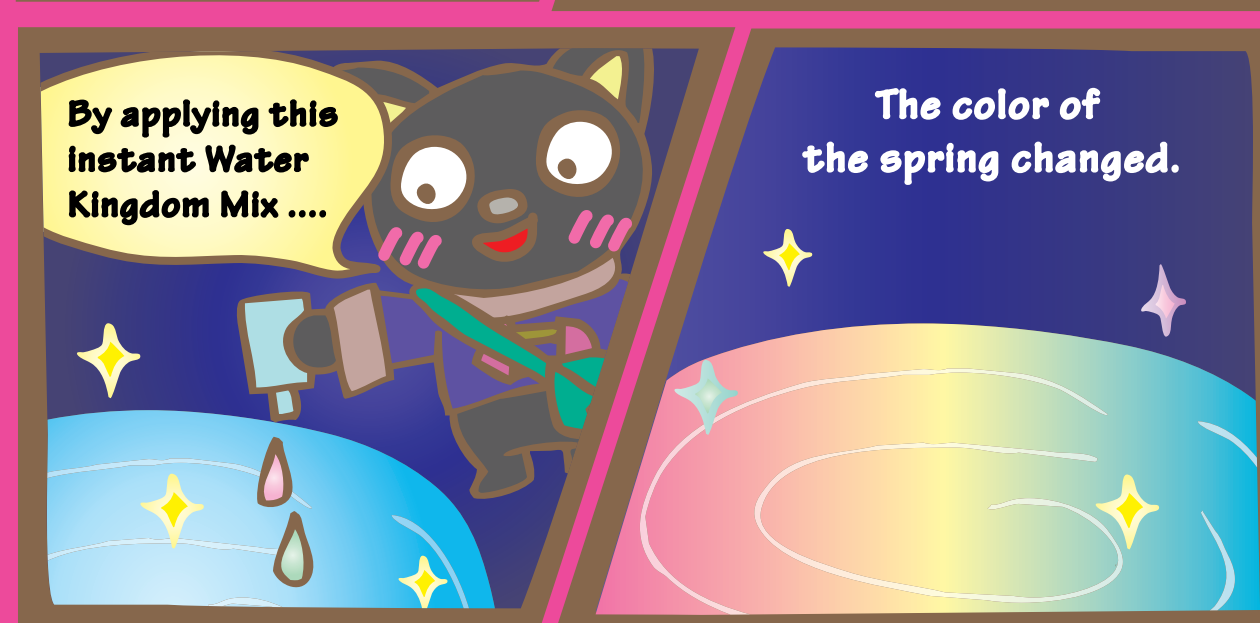
HELLO!

A bus looks like
a caterpillar came
out of the ground!

Hurry!
Let's get on!

Bye!
Don't forget to
get off at Firefly
Shooting Star!

tokotokotokotokotoko



Ya!

Splash

BUKUBUKU...

BUKUBUKU...

Wow!
Mermaids?

Yes! They are guarding the door to the Water Kingdom. We are almost there.

**Gring!
We can
breathe!**

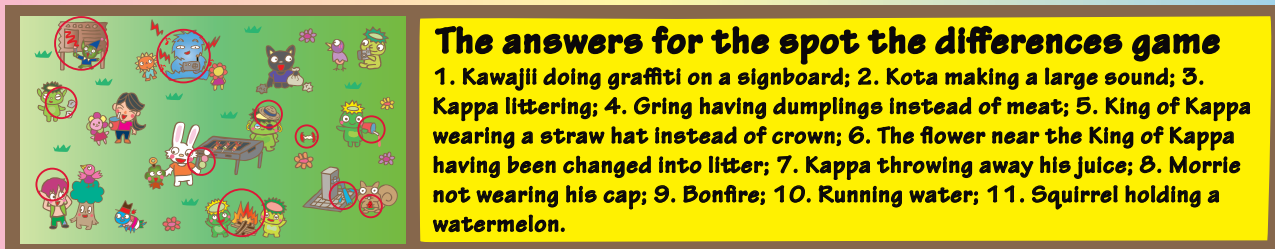
Spot the differences!

Gring and his friends are playing in a barbecue park.
There are **eleven** differences between the two pictures!



Hint: Six of eleven are things you shouldn't do in a park!





The next issue will be published sometime around October

