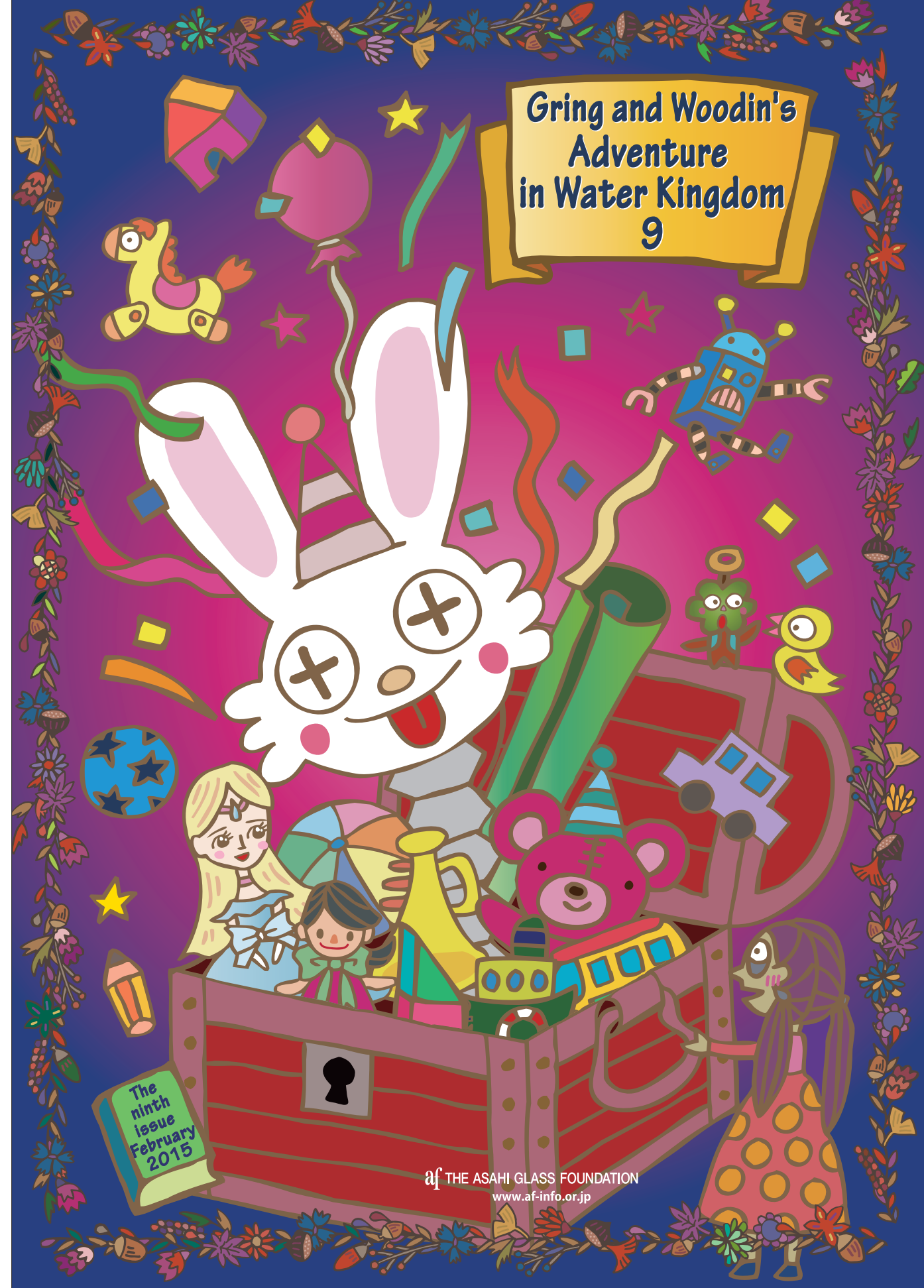


# Gring and Woodin's Adventure in Water Kingdom

9

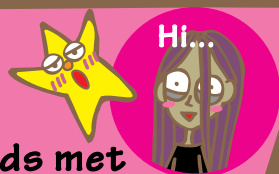


The  
ninth  
issue  
February  
2015

af THE ASAHI GLASS FOUNDATION  
www.af-info.or.jp

## The story so far

Gring and his friends met Majolaine the witch on the way to the castle. They also happened to befriend the happy star. Majolaine decided to come with Gring to the castle to ask about the reason of "Watch for the Witch" warning.



I believe the entrance to the castle is around here



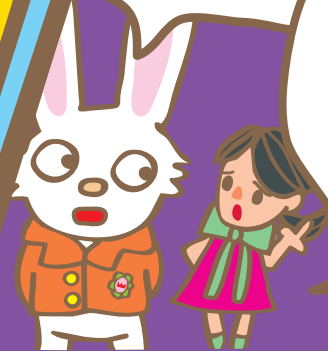
You look pretty!

Ta-da!  
Ahem



Well, there is a lot of garbage... They still look usable

Yes, it indeed is wasteful. How much waste do you think is discarded in the world?



Oh, what are they doing?



We are checking for witches. You cannot enter the castle in an outfit like that.

Aww... What shall I do?!

Nooooo

Ima-chan... Any idea?



The waste worldwide is very large in quantity! By country, Japan discharges the second most waste only after the U.S., followed by Russia and Germany. In Japan, a person discharges 410 kilograms per year according to calculations.

Reference: Ministry of the Environment of Japan "2005 White Paper on a Sound Material Cycle Society"



There are many clothes in this garbage bag! Let's use this!

Many of them are still wearable!



Matching this and that....!



So use your clothes affectionately! It is essential that if you don't need some clothing, exchange it with your friends or bring it to a used store so that they don't become garbage.

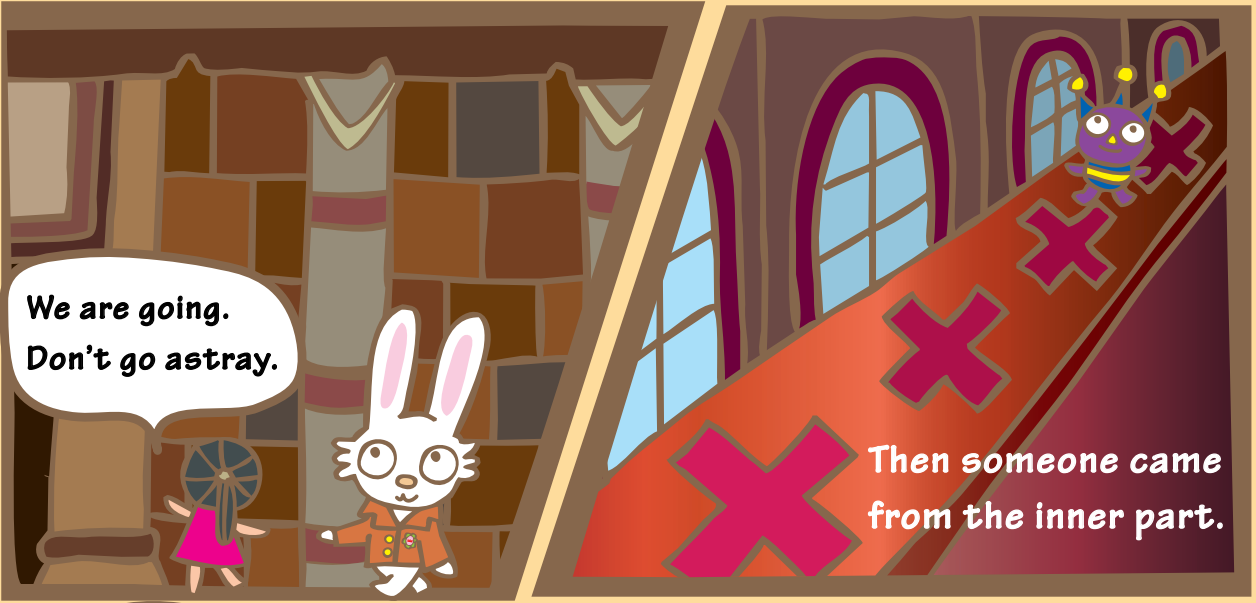
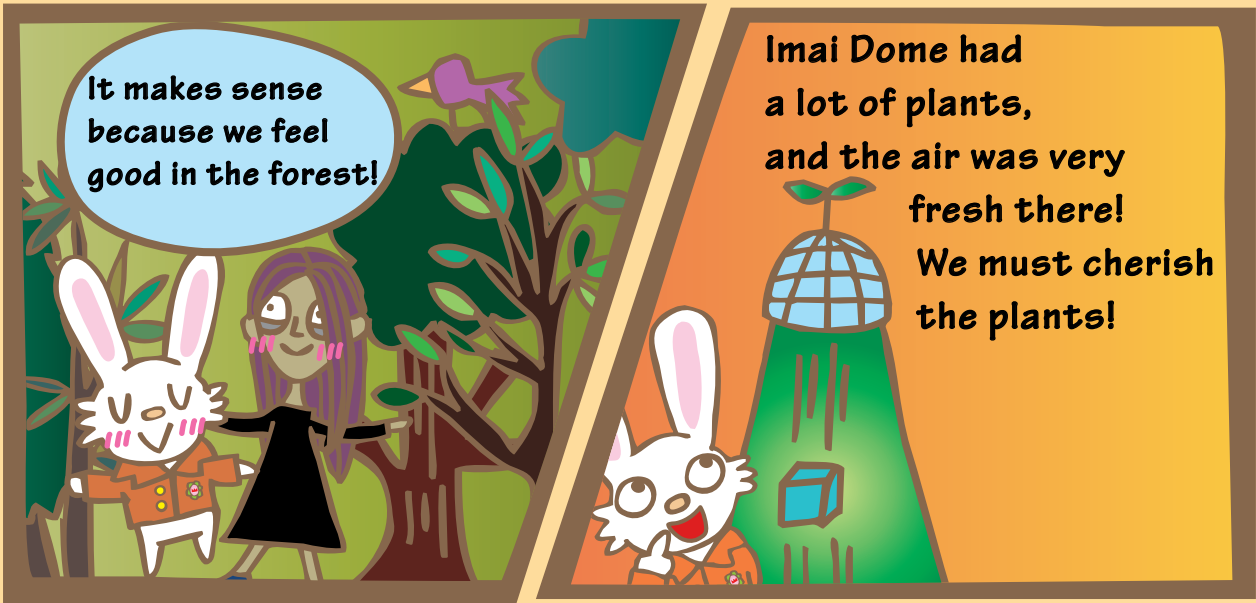
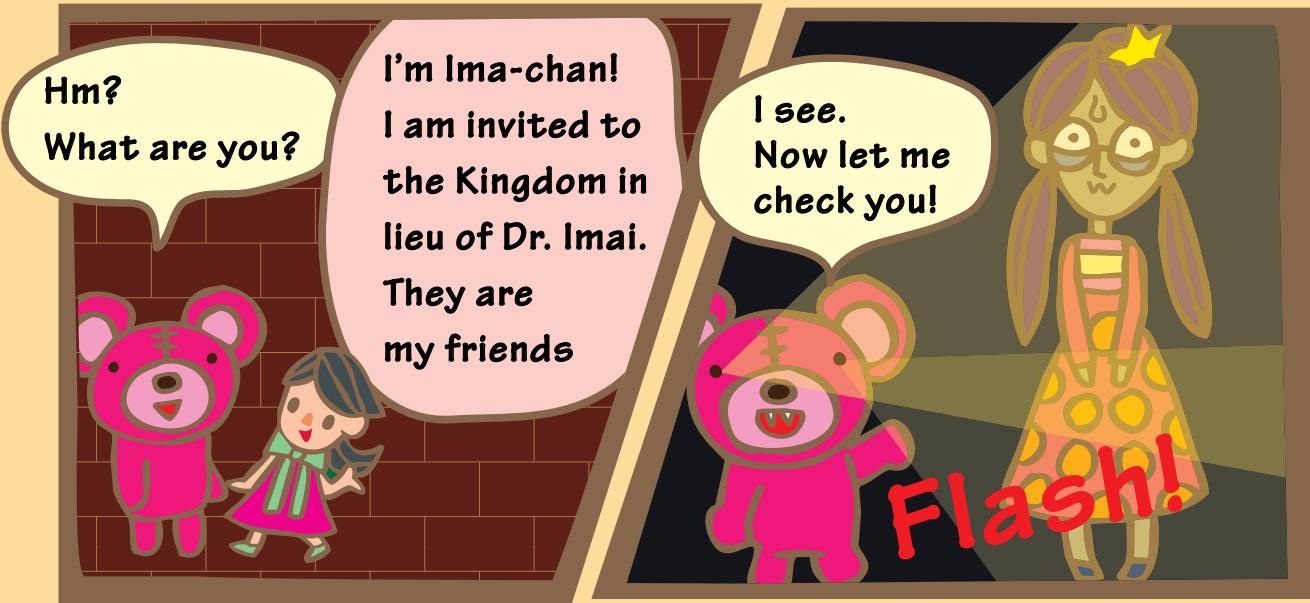


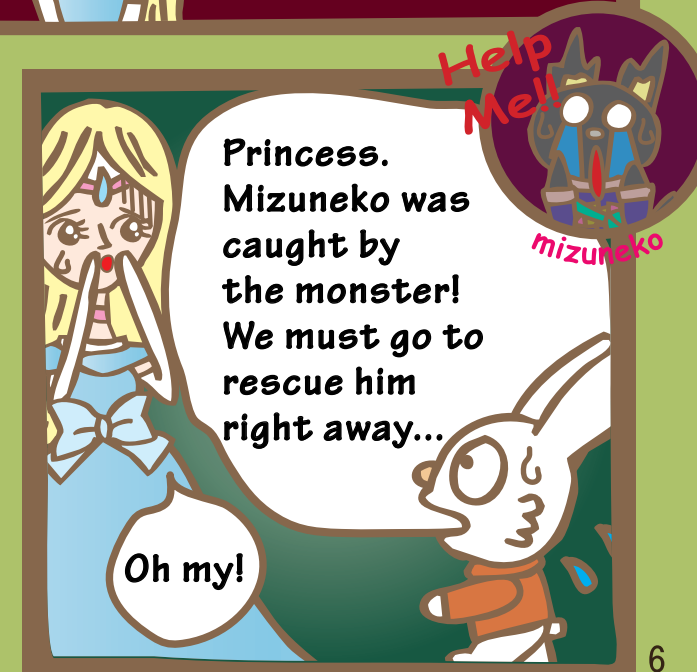
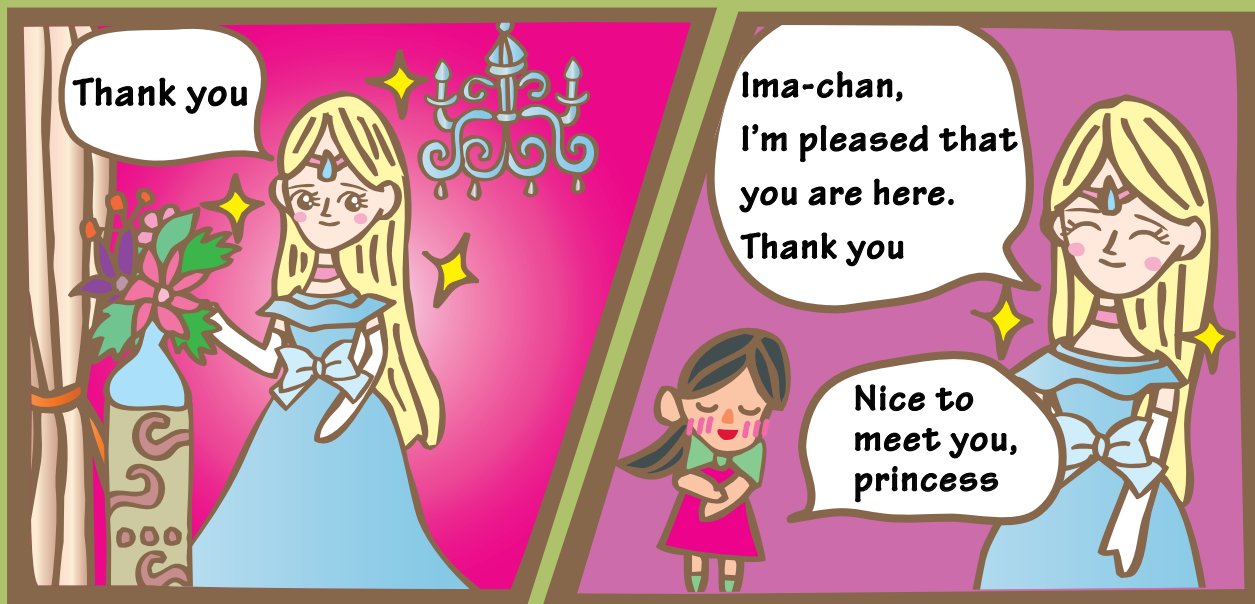
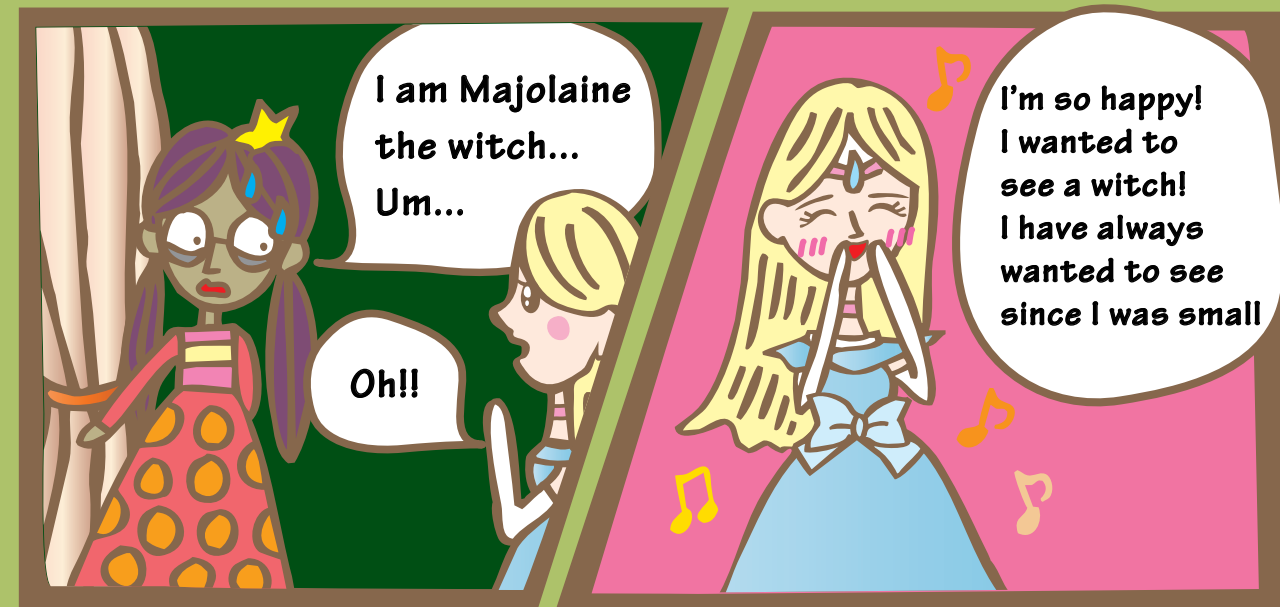
Now! Let's go!

Thump Thump









Princess?  
Open the door!

**Rat-  
Tat**

Oh!  
It's Walwarl!  
What shall I do?

Is there anyone  
with you?

Hide  
somewhere!

Oh, no.  
Oh, no.

Aww  
ww!

Sob...

What is Walwarl like?  
Can Gring and  
his friends rescue Mizuneko?!

**To be  
continued...**

The next issue will be published sometime around April

**Gring and Woodin's Adventure  
in Water Kingdom 9  
February 2015, The Asahi Glass Foundation**

